

posturite.co.uk

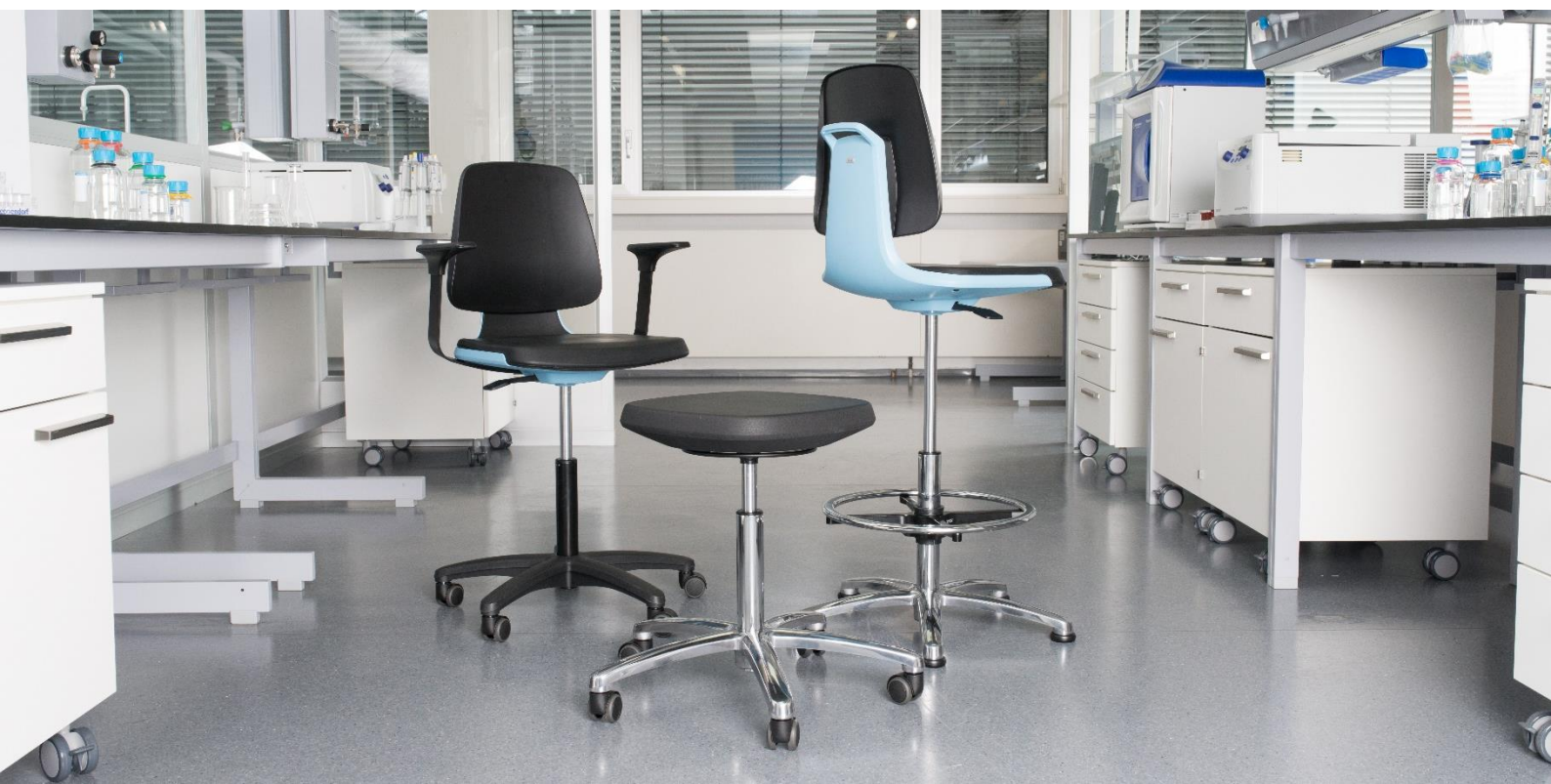


Production and Laboratory Task Chairs

 **POSTURITE**

CONTENTS

Ergonomics in production areas	3
Posturite are here to help	4
Production chair categories	5
Key Questions	6
Posturite’s seating selection process	7
Our manufacturing partners	8
BIMOS	9
HAG	20
RH	23
MDK	26
Score	30
Throna	34
Verco	46
Posturite’s Accreditations	48



Ergonomics in production areas



Bringing ergonomics to laboratories and production spaces

Creating a comfortable, ergonomic workplace is just as important in a lab or production environment as it is in an office. In these environments people tend to move repetitively using a variety of tools and workstations. For this reason, the risk of musculoskeletal injury can be particularly high. It is important to provide staff with equipment that supports them safely and comfortably as they carry out their day-to-day tasks.

Ergonomic risks in industrial environments

- Repetitive motion from tasks that require fine motor function
- Prolonged standing
- Use of small handheld tools
- Tasks that require precision, increasing demands on small muscles and eyes
- Equipment with limited adjustability

The right seating can



Increase
comfort



Reduce risk of
musculoskeletal
disorders



Reduce
absenteeism



Cut maintenance
costs



Boost staff
morale



Improve
productivity

Posturite are here to help



Independent

We research the market for you and have access to products from the market leaders. We recommend the right chairs for you.



Complete service

We support you through the entire process, from product selection all the way through to ethical disposal at end-of-life.



Ergo-expertise

This is what truly separates us from the competition. Our team has a wealth of ergonomic knowledge to share with our clients.



National support

Whether you have one large facility, or several regional sites, we can help wherever chairs are required.



1 or 1000 chairs

Whether you need a specific chair for an employee or a thousand chairs for an entire premises, we can handle any requirement.



Ongoing support

Our support doesn't stop once we've completed the installation – we'll support you through the entire life-cycle of your chairs, and beyond.

Thanks to long-standing relationships we have with our manufacturing partners, we are able to provide access to a huge range of products at competitive pricing. Ensuring you receive the best value options available. Seating is an investment in both the space and the workforce.

Chair categories



We specialise in recommending the right chair for each workstation; regardless of how nuanced or challenging the environment is. A chair's adjustment options, component profile, and manufacturing journey can all play a role in how appropriate it may be for a certain workspace.



Production Seating

At production workstation, chairs need to be resilient and durable enough to withstand the rigours of a manufacturing environment, whilst offering comfortable support for the end user.



ESD Seating

Electrostatic discharge poses a big risk at production workstations, potentially causing considerable damage to both staff and products. ESD chairs divert and discharge static energy to the earth, reducing the static charge generated by sitting.



Laboratory Seating

Laboratory equipment needs to be easy to clean, move around, and adjust to multiple users. Good lab seating fulfils all of these criteria. Wipe-clean upholstery options that are durable and comfortable are key.



Cleanroom Seating

Functional chairs that are designed to meet strict hygiene criteria for cleanrooms of all grades. Specified to include cleanroom specific features such as sealed upholstery, membrane covered controls, and no-oil gas stems.

This key will be found throughout this document on each product page...



If the circle is grey, the chair cannot be specified to meet the requirements of that category

Key Questions



When choosing a task chair for industrial environments – it's important to look at the finer details. The below are the questions that we look to answer during the selection process.

Why are you looking to buy new chairs?

What is the driver for the purchase? Improved comfort and support, increased durability, lower price? To understand what improvements are available, it's important to look at the chairs currently in use to have a baseline from which to explore.

Does the environment have specific H&S requirements?

Are the chairs needed for an area that requires electrostatic discharge (ESD) credentials?
Are the chairs required for a cleanroom with a particular grade requirement. If so, what?
Are the chairs about to go into a manufacturing area where grease and oils are prevalent?
There are purpose-built chairs that have been designed with these scenarios in mind.

The space: How tall are the worktops? Floor type?

The chairs need to fit at the workstation at which they are going to be used. A measurement from the floor to both the topside and underside of the worktop will allow the correct sized gas stem to be selected. Also, an understanding of the floor type will help us to advise on caster or glide type.

What tasks are carried out in the space?

Are users operating telescopes in forward positions for extended periods of time?
Are they carrying out tasks in a fume hood that requires an extended arm position?
Are raw materials being transported within striking distance of the chair and its upholstery?
A chair can be specified with a certain task, and its associated risks, in mind.

What are the employees' requirements and expectations?

For any chair to be considered successful in the space it's being used, those using it have to experience and endorse the associated benefits. It's worth considering previous feedback relating to the chair being replaced, as well as what the staff feel would be beneficial. For example, armrests may not be considered a requirement of the space, but the users may insist that they are.

Posturite seating selection

Product Presentation

We'll present a selection of recommended chairs based on discussions in the initial meeting. This then allows us to explore options in more detail

1



Meet

Virtual or Face to Face meeting with our experts to discuss the project and preferences

2



3



User Trials

We'll arrange for chairs to be delivered and demonstrated onsite. This will allow various stakeholders to try out the options

Customisation

Confirm finish and fabric choices as well as functional options you wish to include.

5



Delivery and Installation

We will deliver and install chairs at the time that suits you, with minimal disruption to your business operations. We can include 'floor-walks' and further training to support implementation

4



After Sale

Repairs, audits, training, ongoing ergonomic support. We are here throughout the life of the chairs and beyond

6



bimos

Flokk

 **THRONA**[®]
PERFORMANCE AND DESIGN CHAIRS

**Our
Manufacturing
Partners**

 **SCORE**[®]
seats to suit!

 **MDK**
OFFICE SEATING

verco.



BIMOS

BIMOS Neon



From practical experience for practical application. The flagship chair in the BIMOS range. Offering specifications across all industrial categories, with ergonomics at heart.

FEATURES

- Lockable back height adjustment
- Seat height adjustment
- Seat depth adjustment as standard
- Available in synchronous or permanent contact mechanism
- Available in 2 standard gas stem heights
- Available in 4 upholstery types
- Available in multiple upholstery finishes
- Easy click replaceable upholstery pads
- Available in 4 flexistrip colours
- Available with 4D armrests
- Available in Casters, Glides, and stop-go casters
- Footplate and glides come as standard with Draughtsman height gas stems



Seat height (H) mm	540-620, 590-870
Seat width (W) mm	470
Seat depth (D) mm	420-480
Back width (W) mm	435
Back height (H) mm	570

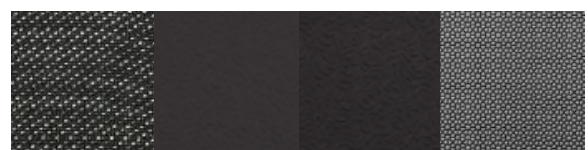


8hr use



Max. Weight:
18.89 stone (120 kg)

Upholstery Options



Fabric Artificial Leather Integral Foam Soft Supertec

BIMOS Labsit



Labsit's intelligent flex function offers comfort while requiring minimum adjustment steps. Lightweight, suitable for universal use, and well positioned in terms of price and performance.

FEATURES

- Seat height adjustment
- Fixed black plastic backrest with 3D flex function
- Flexible front edge of seat
- Available in 2 standard gas stem heights
- Available in 4 upholstery types
- Available in five colours of seat shell (blue, anthracite, white, orange or green)
- Black plastic or polished aluminium base
- Available with height adjustable armrests
- Available in Casters, Glides, and stop-go casters
- Footring and glides come as standard with Draughtsman height gas stems



Seat height (H) mm	540-620, 590-870
Seat width (W) mm	470
Seat depth (D) mm	420-480
Back width (W) mm	435
Back height (H) mm	570

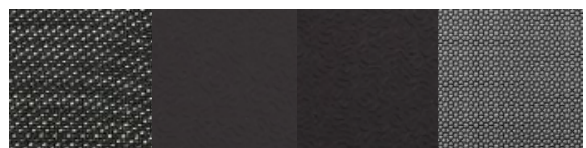


8hr use



Max. Weight:
18.89 stone (120 kg)

Upholstery Options



Fabric Artificial Leather Integral Foam Soft Supertec



BIMOS Nexxit



Unique industrial ergonomics and sturdiness:
Nexxit suits a range of user's and tasks. Its synchronous mechanism with automatic weight adjustment promotes beneficial sitting habits with minimal set up intervention.

FEATURES

- Lockable back height adjustment
- Seat height adjustment
- Seat depth adjustment as standard
- Lockable permanent contact back angle
- Independent seat tilt
- Available in 2 standard gas stem heights
- Available in 4 upholstery types
- Available in 4 flexistrip colours
- Available with 4D armrests
- Available in Casters, Glides, and stop-go casters
- Footring and glides come as standard with Draughtsman height gas stems



Seat height (H) mm	450-600, 570-820
Seat width (W) mm	460
Seat depth (D) mm	400-460
Back width (W) mm	435
Back height (H) mm	530

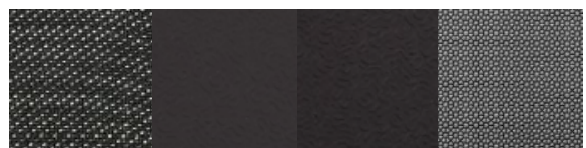


8hr use



Max. Weight:
18.89 stone (120 kg)

Upholstery Options



Fabric Artificial Leather Integral Foam Soft Supertec



BIMOS Labster



In contrast to adaptations made to office chairs to make them suitable for use in laboratories, Labster is purposefully designed for this space. Seamless design concept with the mechanisms located under a washable soft cover.

FEATURES

- Lockable back height adjustment
- Seat height adjustment
- Seat depth adjustment as standard
- Auto motion technology
- Ergonomically shaped seat and back upholstery
- Plastic star base
- Available in 2 standard gas stem heights
- Available in 2 upholstery types
- Available in multiple upholstery colours
- Available in Casters, Glides, and stop-go casters
- Footring and glides come as standard with Draughtsman height gas stems



Seat height (H) mm	540-620, 590-870
Seat width (W) mm	470
Seat depth (D) mm	420-480
Back width (W) mm	435
Back height (H) mm	570



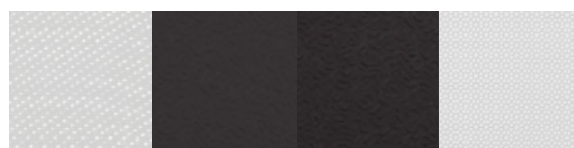
8hr use



Max. Weight:
18.89 stone (120 kg)



Upholstery Options



Artificial
Leather Integral
Foam Soft

BIMOS Cleanroom



Chairs from Bimos' Cleanroom series perfectly suited to cleanroom environments. In addition to outstanding clean room properties, they are also ideally suited for electrostatic discharge.

FEATURES

- Available in 'Basic', 'Plus', and stool models
- Sealed upholstery with foam backing
- Encapsulated mechanism for easy clean
- Materials capable of electrostatic discharge
- Lockable back height adjustment
- Seat height adjustment
- Permanent contact back angle
- Available in 2 standard gas stem heights
- Available in 2 back heights
- Available with Loop or 4D armrests
- Available in Casters, Glides, and stop-go
- Footplate and glides come as standard with Draughtsman height gas stems

Seat height (H) mm	470-610, 620-870
Seat width (W) mm	460
Seat depth (D) mm	440
Back width (W) mm	460
Back height (H) mm	430 and 530



8hr use



Max. Weight:
18.89 stone (120 kg)

Upholstery Options



Artificial
Leather



BIMOS Unitec



Unitec is a low-cost entry-level model for production environments. A variety of finish options makes this chair an adaptable option for those looking for an economically priced solution.

FEATURES

- Ratcheted back height adjustment
- Seat height adjustment
- Permanent contact back angle adjustment.
- Available in 2 standard gas stem heights
- Available in 4 upholstery types
- Available with Hoop or 4D armrests
- Available in Casters, Glides, and stop-go casters
- Footplate and glides come as standard with Draughtsman height gas stems



Seat height (H) mm	540-620, 590-870
Seat width (W) mm	470
Seat depth (D) mm	420-480
Back width (W) mm	435
Back height (H) mm	570

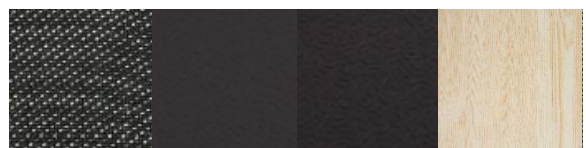


8hr use



Max. Weight:
18.89 stone (120 kg)

Upholstery Options



Fabric

Artificial
Leather

Integral
Foam Soft

Wood



BIMOS Sintec



Sintec offers users flexibility. This is due to a choice in mechanism and replaceable upholstery pads which can be changed quickly and easily. The chair also offers additional options, such as safety harness and swivel lock.

FEATURES

- Lockable back height adjustment
- Seat height adjustment
- Available in synchronous or permanent contact mechanism.
- Available in 2 standard gas stem heights
- Available in 4 upholstery types
- Available in multiple upholstery finishes
- Easy click replaceable upholstery pads
- Available with Loop or 4D armrests
- Available with swivel lock gas stem
- Available with lap belt / safety harness
- Available in Casters, Glides, and stop-go casters
- Footplate and glides come as standard with Draughtsman height gas stems



Seat height (H) mm	530-580, 580-850
Seat width (W) mm	480
Seat depth (D) mm	430
Back width (W) mm	480
Back height (H) mm	420



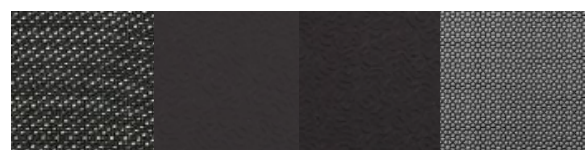
10 YEAR
Warranty

8hr use



Max. Weight:
18.89 stone (120 kg)

Upholstery Options



Fabric Artificial Leather Integral Foam Soft Supertec



BIMOS All-In-One



Bimos All-In-One is a hybrid solution, bringing together features that suit both an office and workplace chair environment. Versatile and adjustable, appropriate for customers who have both workstation types in a single setting.

FEATURES

- Ratcheted back height adjustment
- Seat height adjustment
- Seat depth adjustment as standard
- Synchronous tension-controlled mech
- Adjustable seat inclination
- Available in 2 standard gas stem heights
- Available in 3 upholstery types
- Available with 4D armrests
- Available in Casters, Glides, and stop-go casters
- Footring and glides come as standard with Draughtsman height gas stems



Seat height (H) mm	450-600, 570-830
Seat width (W) mm	480
Seat depth (D) mm	410-470
Back width (W) mm	450
Back height (H) mm	600

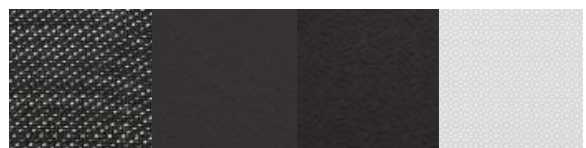


8hr use



Max. Weight:
18.89 stone (120 kg)

Upholstery Options



Fabric Artificial Integral
Leather Foam Soft



BIMOS Fin



Fin is a solution for many types of standing work. Optimized for in use in industry, research, trade and office environments to be used in conjunction with a healthy sit/stand working routine.

FEATURES

- Extra wide seat
- Integrated handles
- Soft-touch PU foam
- 20° Seat Swivel
- Infinitely adjustable height
- Convenient gas spring
- Gripped 2 prong-base
- Replaceable glides including plastic and felt glides
- Column tilted forwards 4° to encourage beneficial posture and support when working



Seat height (H) mm	620-850
Seat width (W) mm	450
Seat depth (D) mm	150
Back width (W) mm	n/a
Back height (H) mm	n/a



8hr use



Max. Weight:
18.89 stone (120 kg)



Upholstery Options



Integral
Foam Soft



HAG



Inspired by a horse's saddle, the Capisco offers the user a variety of working positions and encouraging beneficial movement – from standard, perch, side-saddle, and even reverse. An iconic chair for a very good reason.

FEATURES

- Lockable back height adjustment
- Seat height adjustment
- Seat depth adjustment (8106 and 8107)
- HAG inBalance tension-controlled lockable movement mechanism
- Available in 3 standard gas stem heights
- Available in 3 metal finishes (white, silver, black)
- Available in a variety of upholstery finishes
- Available with a headrest
- Available in Casters, Glides, and break-loaded casters
- Footring comes as standard with 265mm height gas stems



Seat height (H) mm	470-655, 555-810
Seat width (W) mm	470
Seat depth (D) mm	335-390
Back width (W) mm	n/a
Back height (H) mm	460



8hr use



Max. Weight:
23.5 stone (150 kg)

Upholstery Options



Fabric

Vinyl

HÅG Capisco Puls



The HÅG Capisco Puls provides you with all the benefits of the HÅG Capisco. For lively environments, it's a versatile choice. It's easy to wipe down and caters for raised work in forward positions.

FEATURES

- Lockable back height adjustment
- Seat height adjustment
- Seat depth adjustment (8010 and 8020)
- HAG inBalance tension-controlled lockable movement mechanism
- Available in 3 standard gas stem heights
- Available in 3 metal finishes (white, silver, black)
- Available in a variety of upholstery finishes
- Available in Casters, Glides, and break-loaded casters
- Footring comes as standard with 265mm height gas stems



Seat height (H) mm	540-620, 590-870
Seat width (W) mm	470
Seat depth (D) mm	420-480
Back width (W) mm	435
Back height (H) mm	570

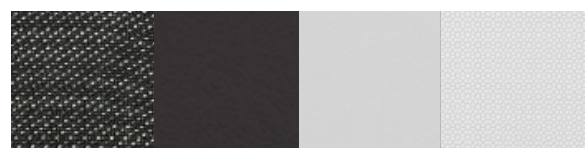


8hr use



Max. Weight:
23.5 stone (150 kg)

Upholstery Options



Fabric Artificial
Leather



RH

RH Activ



Taking inspiration from RH's office chair options movement mechanisms. A single lever that can unlock the back angle, seat tilt, or both simultaneously. A very durable and supportive option for any operator.

FEATURES

- Lockable back height adjustment
- Seat height adjustment
- Seat depth adjustment as standard
- Back angle/seat tilt functionality in 1 lever
- Available in multiple back/seat pad size combinations.
- Available in multiple upholstery finishes
- Easy click replaceable upholstery pads
- Available with multiple armrest options
- Available in Casters, Glides, and stop-go casters
- Footplate and glides come as standard with Draughtsman height gas stems



Seat height (H) mm	392-522, 590-680, 600-850
Seat width (W) mm	440 or 460
Seat depth (D) mm	390-445 or 420-475
Back width (W) mm	370
Back height (H) mm	295 or 430



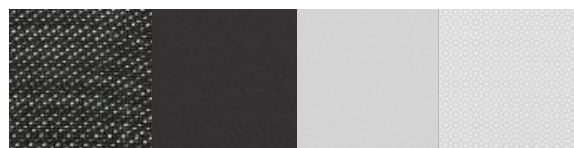
8hr use



Max. Weight:
23.5 stone (150 kg)



Upholstery Options



Fabric Artificial
Leather

RH Support



Designed for people who need flexibility when switching between sitting and standing. Supports working at different heights or even “back to front”. Various models to match working environment requirements.

FEATURES

- Lockable back height adjustment
- Seat height adjustment
- Permanent contact back angle
- Available in 3 seat pad styles
- Available in multiple upholstery finishes
- Available in Casters, Glides, and stop-go casters
- Footplate and glides come as standard with Draughtsman height gas stems



Seat height (H) mm	375-510, 485-545, 565-810
Seat width (W) mm	350, 410, 450
Seat depth (D) mm	240 or 380
Back width (W) mm	380
Back height (H) mm	230



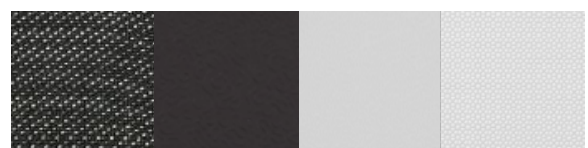
8hr use



Max. Weight:
23.5 stone (150 kg)



Upholstery Options



Fabric Artificial
Leather



MDK

Positiv Contour



A typical, entry level chair option that mirrors a lot of the same functionality found in an office chair. Available in both standard height or draughtsman.

FEATURES

- Seat height adjustment
- Ratcheted or Turn-wheel back height
- Independent Back Angle
- Available with seat depth (std height)
- Available in 2 standard gas stem heights
- Available in multiple upholstery finishes
- Available with multiple armrest options
- Available in Casters, Glides, and stop-go casters
- Footplate and glides come as standard with Draughtsman height gas stems



Seat height (H) mm	460-540, 590-870
Seat width (W) mm	490
Seat depth (D) mm	450
Back width (W) mm	440
Back height (H) mm	380-420, 480-520



8hr use



Max. Weight:
18.89 stone (120 kg)

Upholstery Options



Fabric Artificial
Leather



Positiv R600



Comparable to the Positiv Contour, but with a heavier duty mechanism, bringing the weight limit up to 150kg. The industrial version of the Positiv R600 office chair that has been available at Posturite since 2013.

FEATURES

- Seat height adjustment
- Ratcheted back height
- Independent Back Angle
- Available with seat depth (std height)
- Available in 2 standard gas stem heights
- Available in multiple upholstery finishes
- Available with multiple armrest options
- Available in Casters, Glides, and stop-go casters
- Footplate and glides come as standard with Draughtsman height gas stems



Seat height (H) mm	540-620, 590-870
Seat width (W) mm	470
Seat depth (D) mm	420-480
Back width (W) mm	435
Back height (H) mm	570



8hr use



Max. Weight:
23.5 stone (150 kg)



Upholstery Options



Fabric Artificial
Leather

A range of Polyurethane chairs made in the UK. Familiar task seating adjustments to allow the user to position themselves suitability at a range of working heights.



FEATURES

- Turn-wheel Lockable back height
- Seat height adjustment
- Permanent contact back angle
- Available in a stool model
- Available in 2 standard gas stem heights
- Available in Casters, Glides, and stop-go casters
- Footplate and glides come as standard with Draughtsman height gas stems



Seat height (H) mm	430-555, 590-870
Seat width (W) mm	460
Seat depth (D) mm	430
Back width (W) mm	415
Back height (H) mm	335-385

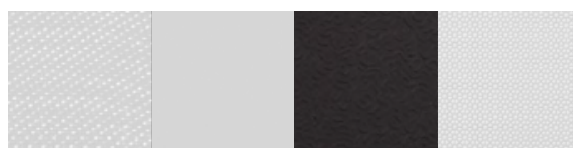


8hr use



Max. Weight:
18.89 stone (120 kg)

Upholstery Options



PU Foam





SCORE

Score Jolly



A saddle chair with a flat seat pad. Available in fixed or balance mechanisms, depending on how much motion you are looking for. Compact, easy to store, but also encourage a beneficial pelvic position when perching.

FEATURES

- Seat height adjustment
- Available in fixed or balance seat angle
- Available in multiple upholstery options
- Available in multiple upholstery finishes
- Available with rotatable back/armrest
- Available with a polished 5 star base
- Available with a lockable foot control
- Available in Casters, Glides, and stop-go casters
- Footplate and glides come as standard with Draughtsman height gas stems



Seat height (H) mm	490-630, 590-770, 630-880
Seat width (W) mm	430
Seat depth (D) mm	330
Back width (W) mm	n/a
Back height (H) mm	n/a



8hr use



Max. Weight:
18.89 stone (120 kg)

Upholstery Options



Fabric

Vinyl

Score Amazone



A saddle chair with a flat seat pad. Available in fixed or balance mechanisms, depending on how much motion you are looking for. Compact, easy to store, but also encourage a beneficial pelvic position when perching.

FEATURES

- Seat height adjustment
- Available with either an adjustable or balance seat angle
- Available in multiple upholstery options
- Available in multiple upholstery finishes
- Available with rotatable back/armrest
- Available with a polished 5 star base
- Available with a lockable foot control
- Available in Casters, Glides, and stop-go casters
- Footplate and glides come as standard with Draughtsman height gas stems



Seat height (H) mm	490-630, 590-770, 630-880
Seat width (W) mm	340
Seat depth (D) mm	300
Back width (W) mm	n/a
Back height (H) mm	n/a



8hr use



Max. Weight:
18.89 stone (120 kg)

Upholstery Options



Fabric

Vinyl

Score Jumper



A saddle chair with a flat seat pad. Available in fixed or balance mechanisms, depending on how much motion you are looking for. Compact, easy to store, but also encourage a beneficial pelvic position when perching.

FEATURES

- Seat height adjustment
- Available in fixed or balance seat angle
- Available in multiple upholstery options
- Available in multiple upholstery finishes
- Available with rotatable back/armrest
- Available with a polished 5 star base
- Available with a lockable foot control
- Available in Casters, Glides, and stop-go casters
- Footplate and glides come as standard with Draughtsman height gas stems



Seat height (H) mm	490-630, 590-770, 630-880
Seat width (W) mm	440
Seat depth (D) mm	300
Back width (W) mm	n/a
Back height (H) mm	n/a



8hr use



Max. Weight:
18.89 stone (120 kg)

Upholstery Options



Fabric

Vinyl



 **THRONA**[®]
PERFORMANCE AND DESIGN CHAIRS



Throna

Throna OTC



Standard Laboratory task chair that provides familiar adjustability with traditional levers. Standard height or Draughtsman options available.

FEATURES

- Lockable back height adjustment
- Seat height adjustment
- Independent back angle adjustment
- Available in 3 standard gas stem heights
- Available in 2 upholstery types
- Available in multiple upholstery finishes
- Available in Casters, Glides, and stop-go casters
- Footplate and glides come as standard with Draughtsman height gas stems



Seat height (H) mm	440-570, 520-720, 620-870
Seat width (W) mm	440
Seat depth (D) mm	430
Back width (W) mm	435
Back height (H) mm	410-480



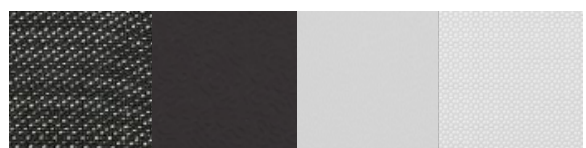
8hr use



Max. Weight:
18.89 stone (120 kg)



Upholstery Options



Fabric Artificial
Leather

Throna Vela



The Vela is a versatile chair at an economical price point that can be specified for a range of working environments. Production, ESD, and Cleanroom models are available, and a range of mechanism types can be fitted.

FEATURES

- Lockable back height adjustment
- Seat height adjustment
- Available with a seat depth adjustment
- Available in a-synchron, synchron soft, tension soft, or permanent contact mechanisms
- Available in 3 standard gas stem heights
- Available in multiple upholstery types
- Available in multiple upholstery finishes
- Available with armrests
- Available in Casters, Glides, and stop-go casters
- Footplate and glides come as standard with Draughtsman height gas stems



Seat height (H) mm	420-550, 500-700, 600-850
Seat width (W) mm	480
Seat depth (D) mm	470
Back width (W) mm	460
Back height (H) mm	420-480



8hr use



Max. Weight:
18.89 stone (120 kg)



Upholstery Options



Fabric

Artificial
Leather

Throna Hexagon



The Hexagon offers similar features to that of a standard office chair; albeit with nuances that make it tailored for lab and cleanroom space – such as sealed upholstery pads and gas lift seals.

FEATURES

- Ratcheted back height adjustment
- Seat height adjustment
- Available in independent back angle or permanent contact mechanism
- Available in 3 standard gas stem heights
- Available in 4 upholstery types
- Available in multiple upholstery finishes
- Available with 4D armrests
- Available with sealed pads and grease retention gas stem
- Available in Casters, Glides, and stop-go casters
- Footplate and glides come as standard with Draughtsman height gas stems



Seat height (H) mm	420-550, 500-700, 600-850
Seat width (W) mm	480
Seat depth (D) mm	470
Back width (W) mm	460
Back height (H) mm	530-590



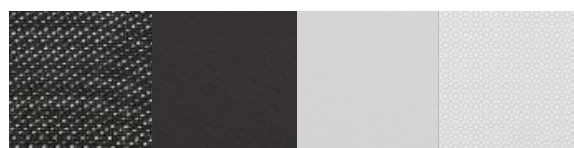
8hr use



Max. Weight:
18.89 stone (120 kg)



Upholstery Options



Fabric Artificial
Leather

Throna Lean



The Lean has a contoured shaped backrest



FEATURES

- Lockable back height adjustment
- Seat height adjustment
- Available with a seat depth adjustment
- Available in a-synchron, synchron soft, tension soft, or permanent contact mechanisms
- Available with a HEPA Filter
- Available in 3 standard gas stem heights
- Available in multiple upholstery types
- Available in multiple upholstery finishes
- Available with armrests
- Available in Casters, Glides, and stop-go casters
- Footplate and glides come as standard with Draughtsman height gas stems



Seat height (H) mm	420-550, 500-700, 600-850
Seat width (W) mm	440
Seat depth (D) mm	440
Back width (W) mm	460
Back height (H) mm	470-540, 510-580

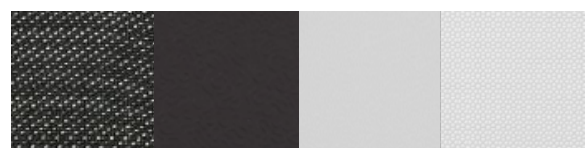


8hr use



Max. Weight:
18.89 stone (120 kg)

Upholstery Options



Fabric Artificial
Leather

Throna Viva



Viva is designed with ergonomic criteria to promote freedom of movement. Its backrest is shaped to provide comfortable support without hindering the operation of shoulders and arms. Equipped with rubber edge to seal against dirt.

FEATURES

- Lockable back height adjustment
- Seat height adjustment
- Seat depth adjustment as standard
- Available in synchronous or permanent contact mechanism.
- Available in 2 standard gas stem heights
- Available in 4 upholstery types
- Available in multiple upholstery finishes
- Available with a HEPA Filter
- Available with 'No Oil' Gas Stem
- Available in Casters, Glides, and stop-go casters
- Footplate and glides come as standard with Draughtsman height gas stems



Seat height (H) mm	540-620, 590-870
Seat width (W) mm	470
Seat depth (D) mm	420-480
Back width (W) mm	435
Back height (H) mm	570



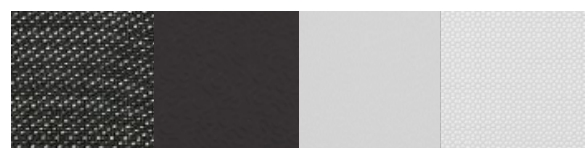
8hr use



Max. Weight:
23.5 stone (150 kg)



Upholstery Options



Fabric Artificial
Leather

Throna Fiocco



The Fiocco chair has a design aimed at facilitating laboratory activities. It boasts an ANTIBACTERIAL label since it is made with special plastics and polyurethanes that inhibit bacterial proliferation.

FEATURES

- Seat height adjustment
- Seat depth adjustment as standard
- Available with a 'harmonic tilting' mech
- Available in 3 standard gas stem heights
- Available in 3 upholstery types
- Available in multiple plastic finishes
- Has 'Antibacterial' PU credentials
- Available with armrests
- Available in Casters, Glides, and stop-go casters
- Footplate and glides come as standard with Draughtsman height gas stems



Seat height (H) mm	400-530, 500-700, 600-850
Seat width (W) mm	460
Seat depth (D) mm	450
Back width (W) mm	430
Back height (H) mm	430



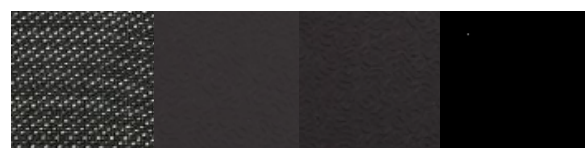
8hr use



Max. Weight:
18.89 stone (120 kg)



Upholstery Options



Fabric Artificial Integral Plastic
Leather Foam Soft

Throna HEPA



Chairs for use in Clean-Room and Clean-Room ESD environments up to class ISO 4. Designed to offer optimal functionality for cleanroom spaces, such as sealed edges, HEPA-filtered seat pad, and a sealed gas stem.

FEATURES

- Lockable back height adjustment
- Seat height adjustment
- Sealed edge upholstery
- HEPA-filtered seat pad
- Sealed gas stem with 'No-Oil' technology
- Available in standard or ESD models
- Available in a-synchronous² or a-synchronous³ movement mechanism
- Available in 3 standard gas stem heights
- Available in multiple upholstery finishes
- Available in Casters, Glides, and stop-go casters
- Footplate and glides come as standard with Draughtsman height gas stems



Seat height (H) mm	440-570, 520-720, 620-870
Seat width (W) mm	440, 450, 460
Seat depth (D) mm	430, 440, 450
Back width (W) mm	430, 440, 450
Back height (H) mm	390-500, 410-480, 510-580



8hr use



Max. Weight:
18.89 stone (120 kg)

Upholstery Options



Artificial
Leather



Throna Wing



Minimalist and lightweight meets practical and comfortable. The wing offers 'Soft Touch' PU Foam upholstery and specifications that meet Clean-Room, ESD, Laboratory or a multitude of other production space specifications.

FEATURES

- PU-Soft Touch upholstery
- Lockable back height adjustment
- Seat height adjustment
- Available in synchronous or permanent contact mechanism.
- Available in 3 standard gas stem heights
- Available in multiple metal finishes
- Available with
- Available in Casters, Glides, and stop-go casters
- Footplate and glides come as standard with Draughtsman height gas stems



Seat height (H) mm	420-550, 500-700, 600-850
Seat width (W) mm	390
Seat depth (D) mm	390
Back width (W) mm	390
Back height (H) mm	140-380

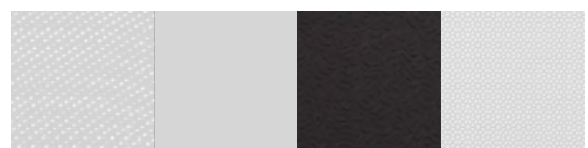


8hr use



Max. Weight:
23.5 stone (150 kg)

Upholstery Options



Integral
Foam Soft



Throna Tulip



A pad design well known to the industry but with an upgrade to the PU foam – PU-Soft Touch. Traditional levels and simple adjustment but with superior build quality and durability.

FEATURES

- PU-Soft Touch upholstery
- Lockable back height adjustment
- Seat height adjustment
- Available in synchronous or permanent contact mechanism.
- Available in 3 standard gas stem heights
- Available in multiple metal finishes
- Available with
- Available in Casters, Glides, and stop-go casters
- Footplate and glides come as standard with Draughtsman height gas stems



Seat height (H) mm	410-540, 490-690, 590-840
Seat width (W) mm	470
Seat depth (D) mm	430
Back width (W) mm	460
Back height (H) mm	350-420, 420-450

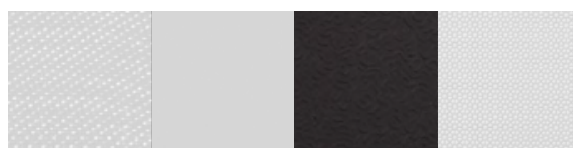


8hr use



Max. Weight:
23.5 stone (150 kg)

Upholstery Options



Integral
Foam Soft



Throna Kinga



A standing aid with a circular seat pad. Height adjustment and swivel are the only features, so the simple product is easily adapted to a range of environments.



FEATURES

- Seat height adjustment
- Swivel seat pad.
- Available in PU-Soft Touch or plastic seat
- Available in 3 standard gas stem heights
- Available in multi-colours of polietilene
- Available in Casters, Glides, and stop-go casters



Seat height (H) mm	410-540, 490-690, 590-840
Seat width (W) mm	390
Seat depth (D) mm	390
Back width (W) mm	n/a
Back height (H) mm	n/a



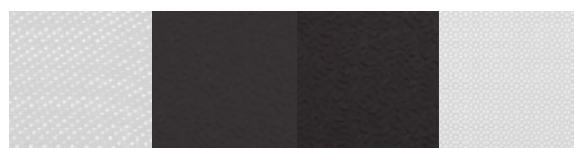
8hr use



Max. Weight:
18.89 stone (120 kg)



Upholstery Options



Plastic

Integral
Foam Soft

Throna Stainless



For use in Cleanroom Class ISO 1, Level 4 operating rooms. Aseptic environments, where sterilization of all the accessories is necessary.

Made of stainless steel AISI 304 and can be disassembled and sterilized in an autoclave.

FEATURES

- Able to be completely disassembled
- Seat height adjustment
- Back height adjustment
- Fixed seat mechanism
- Available in Casters or Glides



Seat height (H) mm	540-620, 590-870
Seat width (W) mm	470
Seat depth (D) mm	420-480
Back width (W) mm	435
Back height (H) mm	570



8hr use



Max. Weight:
18.89 stone (120 kg)

Upholstery Options



Stainless
Steel





VERCO

Vercò Workchair



Workchair is a range of Polyurethane technical seating, comprising of stools, chairs and draftsman's chairs. A choice of backrest, seat types, and gas stem heights allow the solution to be matched to the environment.

FEATURES

- Turn-wheel lockable back height
- Seat height adjustment
- Permanent contact back angle.
- Available multiple gas stem heights
- Polyurethane pads
- Available in Casters, Glides, and antistatic casters
- Footplate and glides come as standard with Draughtsman height gas stems



Seat height (H) mm	420-580, 510-780
Seat width (W) mm	440
Seat depth (D) mm	410
Back width (W) mm	440
Back height (H) mm	340



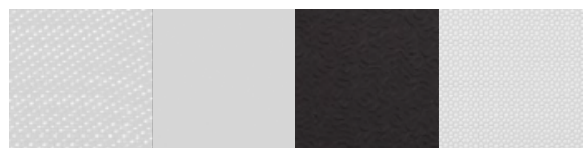
8hr use



Max. Weight:
23.5 stone (150 kg)



Upholstery Options



PU Foam

Accreditations

At Posturite we're proud of our achievements, and that includes the accreditations we've worked hard to earn and retain. These accreditations are in recognition of the extremely high standards we achieve in every area of the business, from health and safety, to security and environment.



ISO 9001



ISO 14001



ISO 27001



OHSAS 18001



Working Safely



We choose our external suppliers carefully to make sure they reflect our own exceptional standards. These are just some of their accreditations:



The certificates mounted on the wall are just the start. Our governing bodies provide ongoing support and advice to help us continue to achieve and exceed the highest standards in our industry.



Posturite Limited
The Mill, Berwick
East Sussex BN26 6SZ
t. +44 (0) 345 345 0010
e. sales@posturite.co.uk
www.posturite.co.uk

Registered in England No. 2574809



ISO 9001
ISO 14001
ISO 27001
ISO 45001

Certificate Number 5312